

Field Notes

July 2024

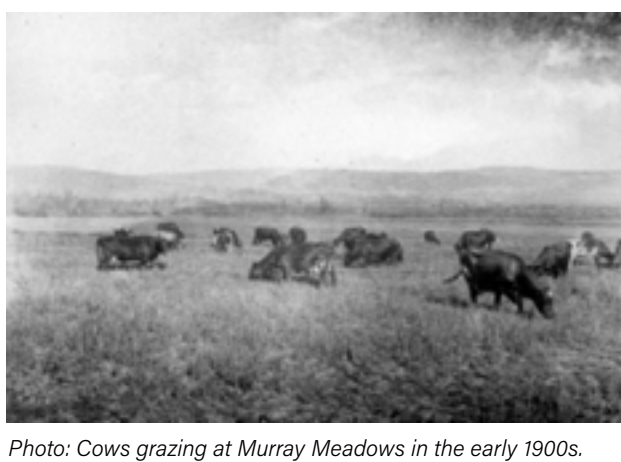


Photo: Cows grazing at Murray Meadows in the early 1900s.

Greetings Friends!

We've had a fantastic summer at the Refuge so far. Camp Habitat is currently in its fourth week, guiding young people in explorations and discoveries all around the Refuge.

Creamer's Dairy Day is coming up this Sunday, July 21st from 12:00 PM to 4:00 PM. We're thrilled to host Alaska Range Dairy again this year. And we're excited to announce the Fairbanks Vintage Power Club will be joining us, bringing out several tractors and sharing more information on the machines that would have been used on the dairy. Historical tours will start at 12:30 PM and 2:30 PM, taking visitors around the outside of the Barn Complex and sharing the history of the dairy and its structures. And of course, we'll have yard games, crafts, and ICE CREAM!

See you at the Refuge!

Grace & Melanie
Friends of Creamer's Field Staff

UPCOMING EVENTS & PROGRAMS

Creamer's DAIRY DAY

JULY 21, 2024
12:00 - 4:00 PM

FARMHOUSE VISITOR CENTER
CREAMER'S FIELD MIGRATORY WATERFOWL REFUGE

Farm Activities

Ice Cream

Learn about Alaskan agriculture and gardening

Experience the history of Creamer's Dairy!

THE FRIENDS OF CREAMER'S FIELD PRESENTS...

Creamer's DAIRY DAY

JULY 21, 2024
12:00 - 4:00 PM

SCHEDULE OF EVENTS

12:30 PM & 2:30 PM
History Tours
MEET OUTSIDE THE FARMHOUSE

1:45 PM
Tire Flipping
MEET AT FARMHOUSE WEST LAWN

Join the Friends of Creamer's Field for Creamer's Dairy Day on July 21 from 12:00 - 4:00 pm at Creamer's Field!

Families and visitors can experience the history of the former dairy while playing fun games and activities, enjoy ice cream, learn all about agriculture and gardening in Alaska from local organizations, and join in on history tours!

For more information, please contact the Friends of Creamer's Field at (907) 978-8457 or visit our website

Joining events include meeting local organizations, history displays, lawn games, ice cream, and visiting the Farmhouse Visitor Center.

Friends of Creamer's Field

Summer Raffle

Alaska Railroad Denali Star Train
from Fairbanks to Denali for 2

\$5 per ticket OR 5 for \$20

Drawing Date:
July 21, 2024
at 4PM

Need not be present to win.

500 Tickets Available
Alaska Gaming Permit #1894

Boreal Buzz: Migration Cultivation



The coming of spring brings many changes to Interior Alaska. Here at Creamer's Field Migratory Waterfowl Refuge in Fairbanks, the skiers and dog mushers put away their skis and puffy coats to wait patiently for the next winter season. As the temperatures warm, the snow dissolves forming vast lakes in the sprawling fields, creating an ideal respite for thousands of birds from their grueling migration journeys as they venture towards their northern breeding grounds. The large spectacle of bird's usher in many travelers from all over the world who are eager to experience the splendor of the Refuge. As the masses feed on the leftover grain in the fields, Refuge management heeds the incoming warmer months and prepares their cultivation for migration.

Read more about what goes into preparing the Refuge for our feathered visitors here:

Field Sketch

Presented by ADFG Biologist, Mark D. Ross

Creamer's Field Migratory Waterfowl Refuge
Field Sketches: *When the Eagle Arrives...*
Mark D. Ross

Where the flocks gather, there will be hunters.

Mew Gulls, since 2014, have taken summer residence at the big pond north of the barns. Their screeching, ear piercing alarm calls alert all to the presence of predators.

Bald Eagles, make forays to the fields in search of prey. Their nest sites are most likely a few miles to the south along the Tanana River. Primarily fish eaters, Bald Eagles can take a variety of rather large prey, animals up to about 10 lbs., the body weight of an adult Bald Eagle.

Mew Gull
L: 16"
W: 1.3 lb.
WS: 43"

Bald Eagle
Length: 39"
Weight: 10 lb.

Mew Gulls harass Bald Eagle

Bald Eagle Searches for prey, wing span 80"

Don't Miss
Dairy Day at Creamer's Field
Sunday, Today: July 21, 12 noon
History, rich activities for All
Find information at the Farmhouse
Information: 978-8457

Woodchucks Watch Out!

Creamer's History Feature

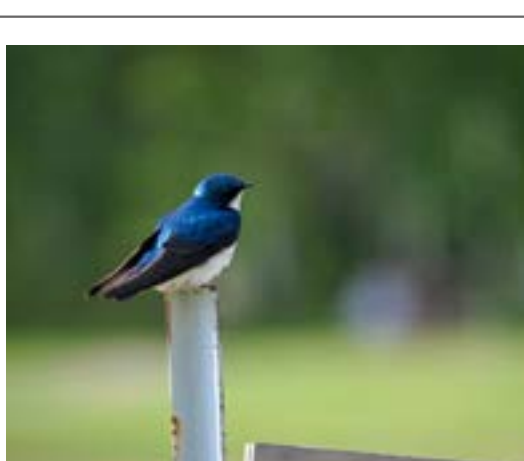


The Farmhouse in 1940 vs. Present Day

The house is the former residence of Charlie and Anna Creamer. After the purchase of the dairy farm from the Hinckley family, the log cabin on site was moved to its current location in 1936. The Creamer's added a basement, kitchen, office, bathroom, covered all the wood siding and painted it in the distinctive white and black exterior. Now that farmhouse is the busy hub of Creamer's Field Migratory Waterfowl Refuge! Look at how tall the trees have grown since the dairy days!

Thank you for being a Friend!

As a 100% community funded organization, your support allows us to offer free educational programs to the Fairbanks community and its visitors. This year we intend to expand our educational outreach, resurface the parking lot closest to the barns, improve trail accessibility, and update our interpretive signage throughout the Refuge.



Our Contact Information
Friends of Creamer's Field
P.O. Box 81065
Fairbanks, AK 99708
(907) 978-8457
director@friendsofcreamersfield.org
www.friendsofcreamersfield.org



Mission Statement
"Inspiring environmental stewardship and lifelong learning through experience, awareness, appreciation and conservation of the natural and historic resources of Creamer's Field Migratory Waterfowl Refuge."